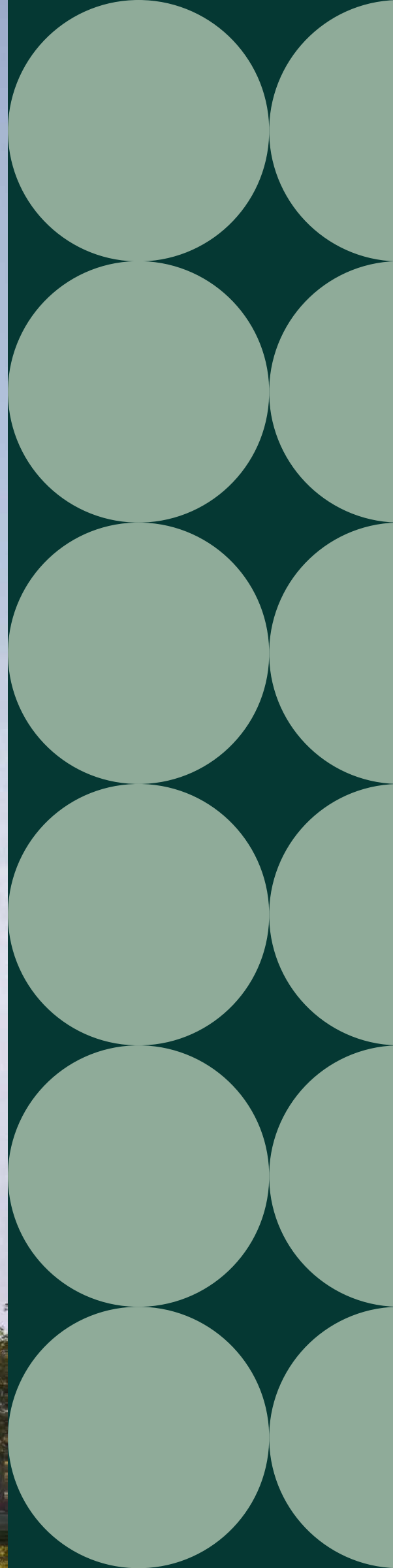


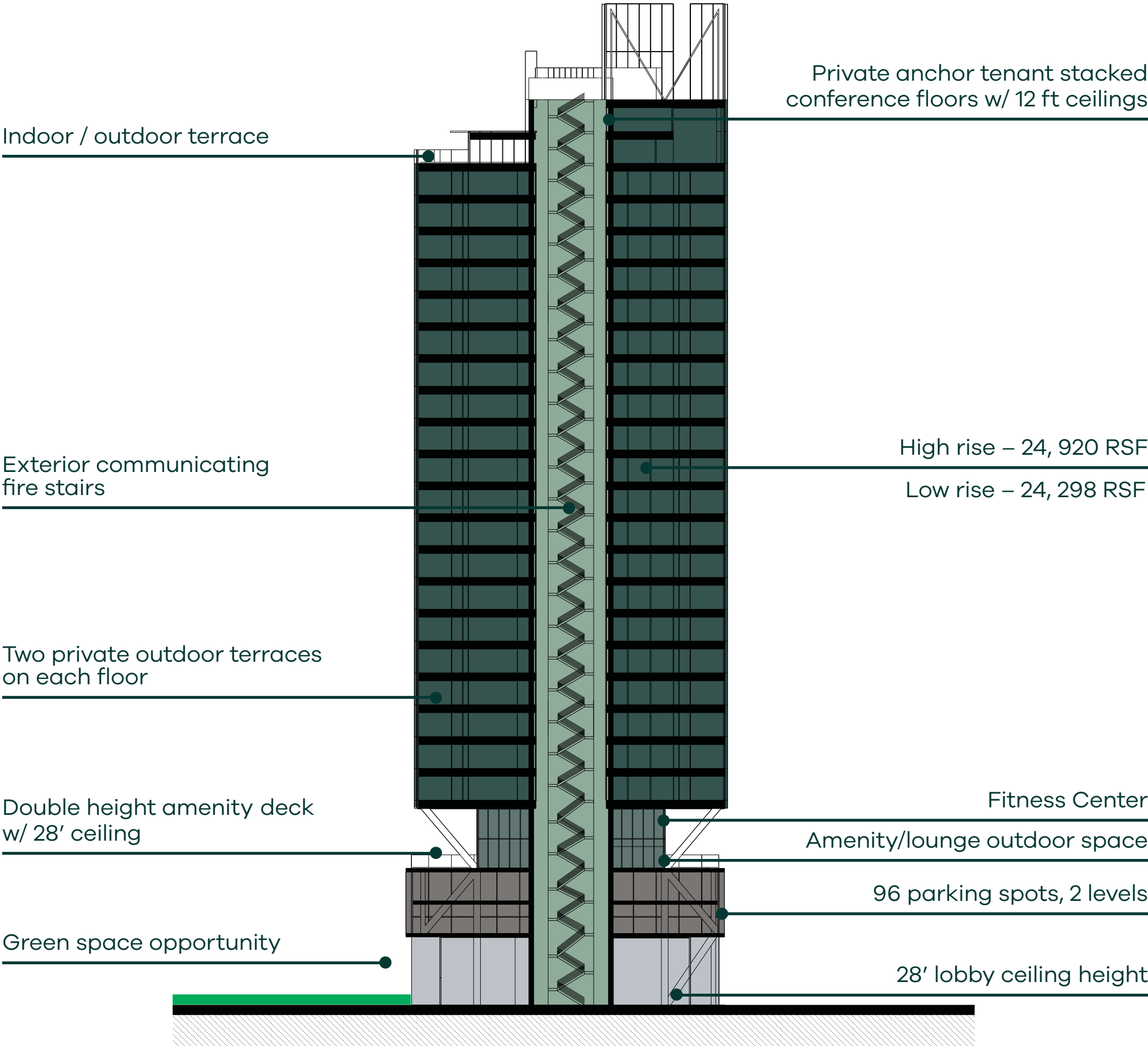
360 NORTH GREEN



24 STORIES

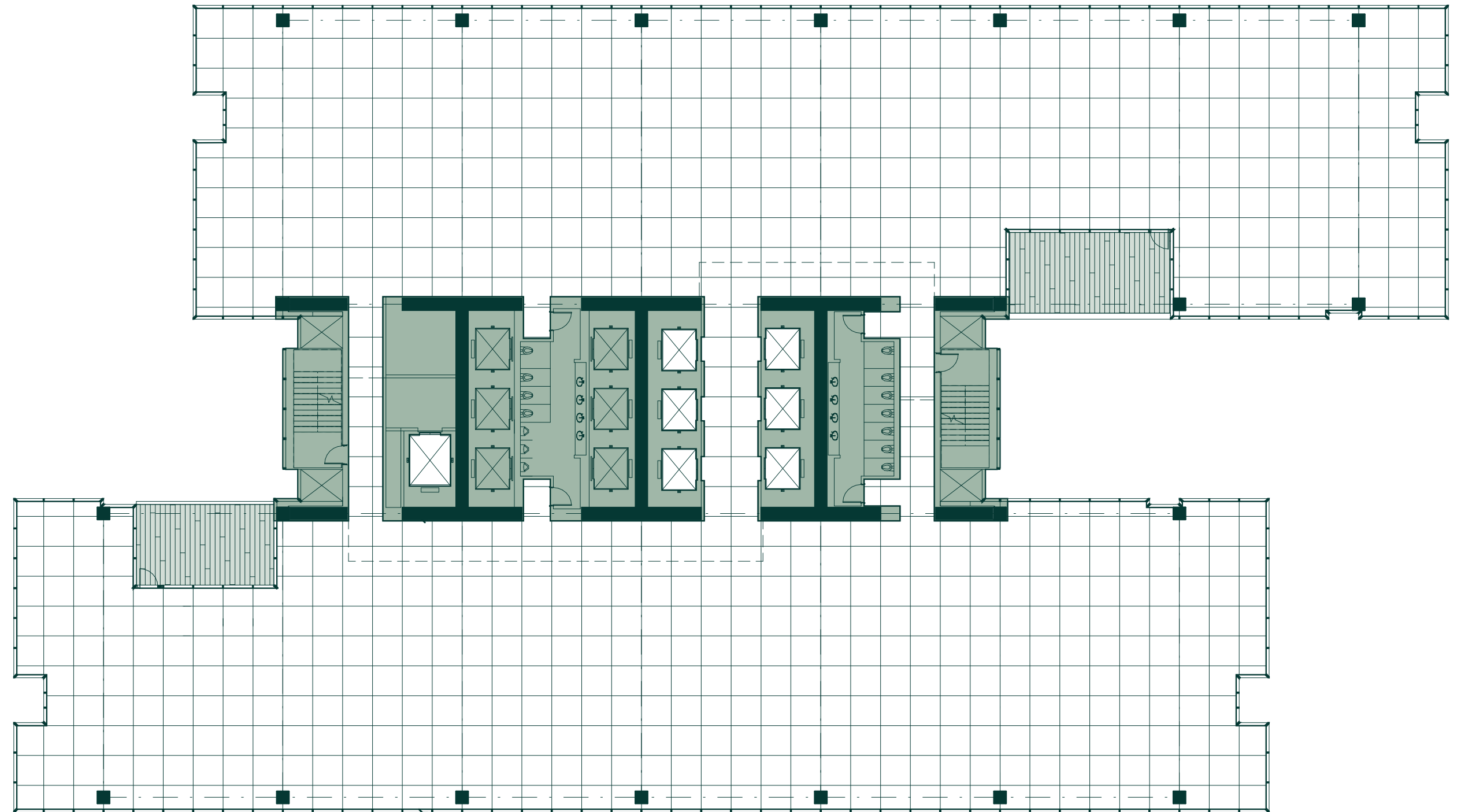
498,844 RSF

- Office
- Amenity
- Parking
- Lobby
- Stairwell



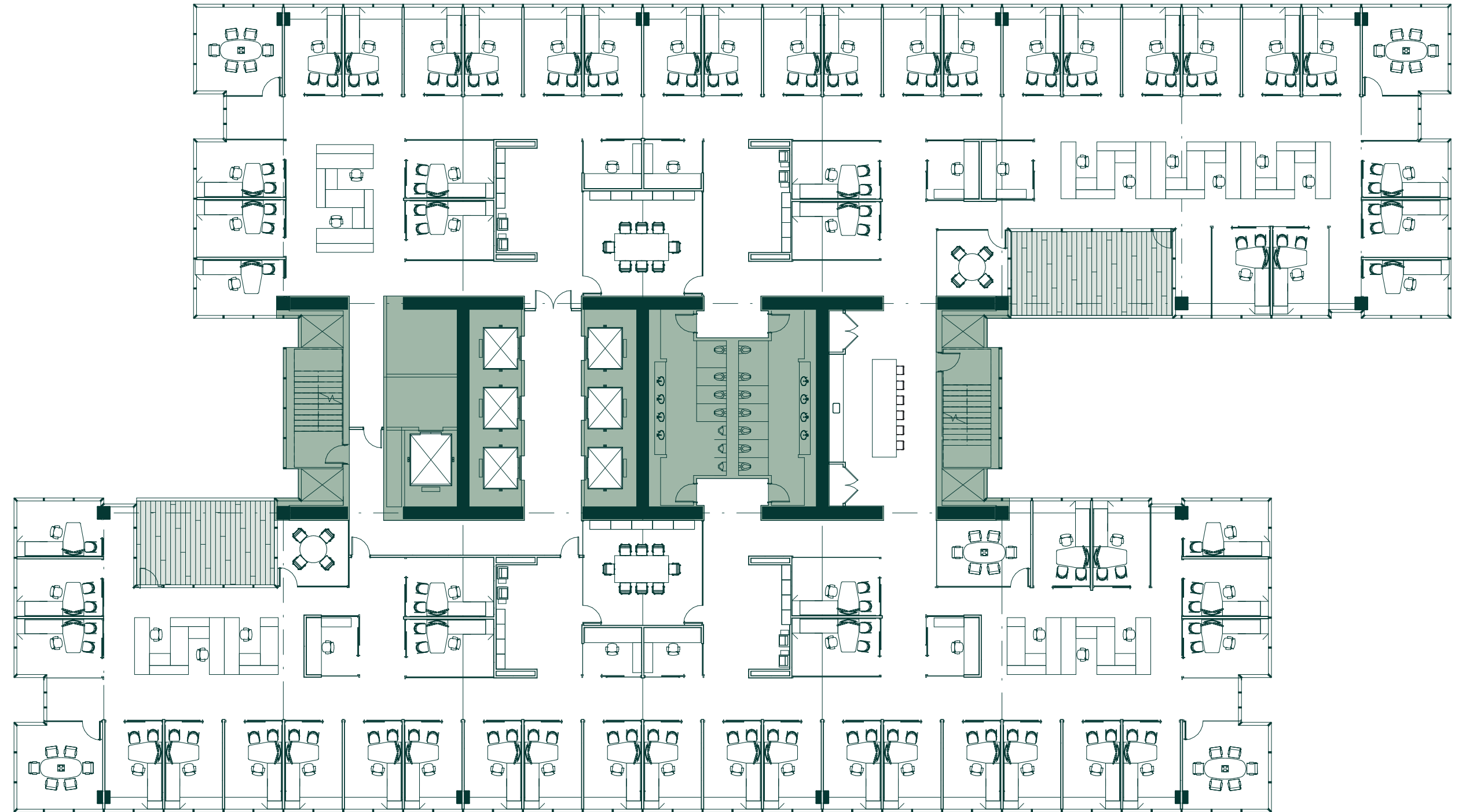
LEVEL 06:
LOW-RISE
360 NORTH GREEN

- **Most efficient building of its kind in Chicago**
- **Column-free space**
- **Double loaded restrooms for enhanced efficiency**
- **Two balconies per floor**
- **8 corners**
- **Fire stair on floor exterior designed as communicating stair and architectural element**



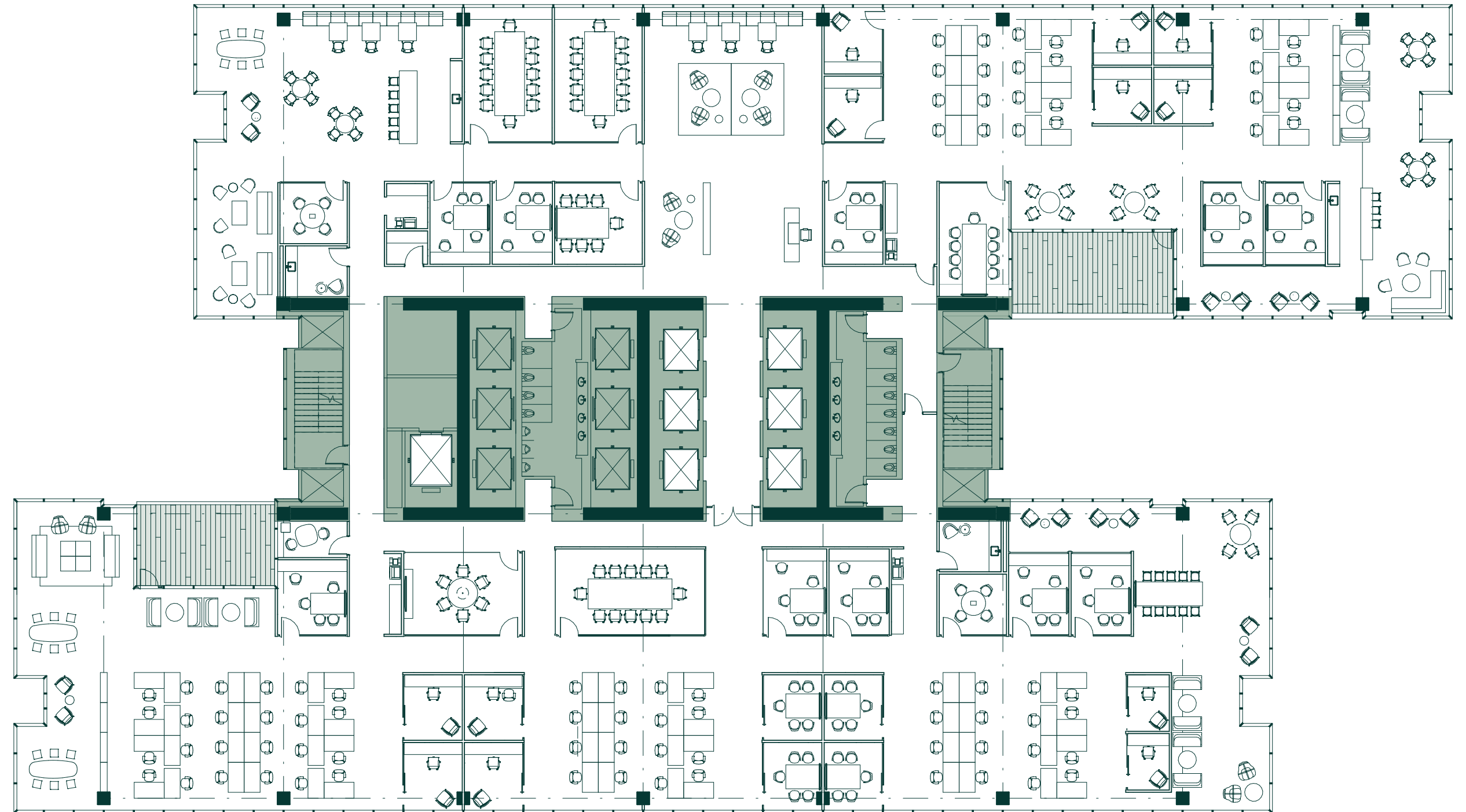
LEVEL 06:
HIGH RISE LAW FIRM TENANT PLAN
360 NORTH GREEN

- **454 RSF per employee**
- **Most efficient building for law firms in Chicago**
- **Reduces required floor area by 40 percent**
- **Column-free space**
- **Double loaded restrooms for enhanced efficiency**
- **Compares favorably to any new downtown development that has recently signed a similar tenant**



LEVEL 22:
HIGH RISE TECH FIRM TENANT PLAN
360 NORTH GREEN

- 80 workstations
- 20 private offices
- 10 conference rooms
- 80 collaborative seats



360 NORTH GREEN

